

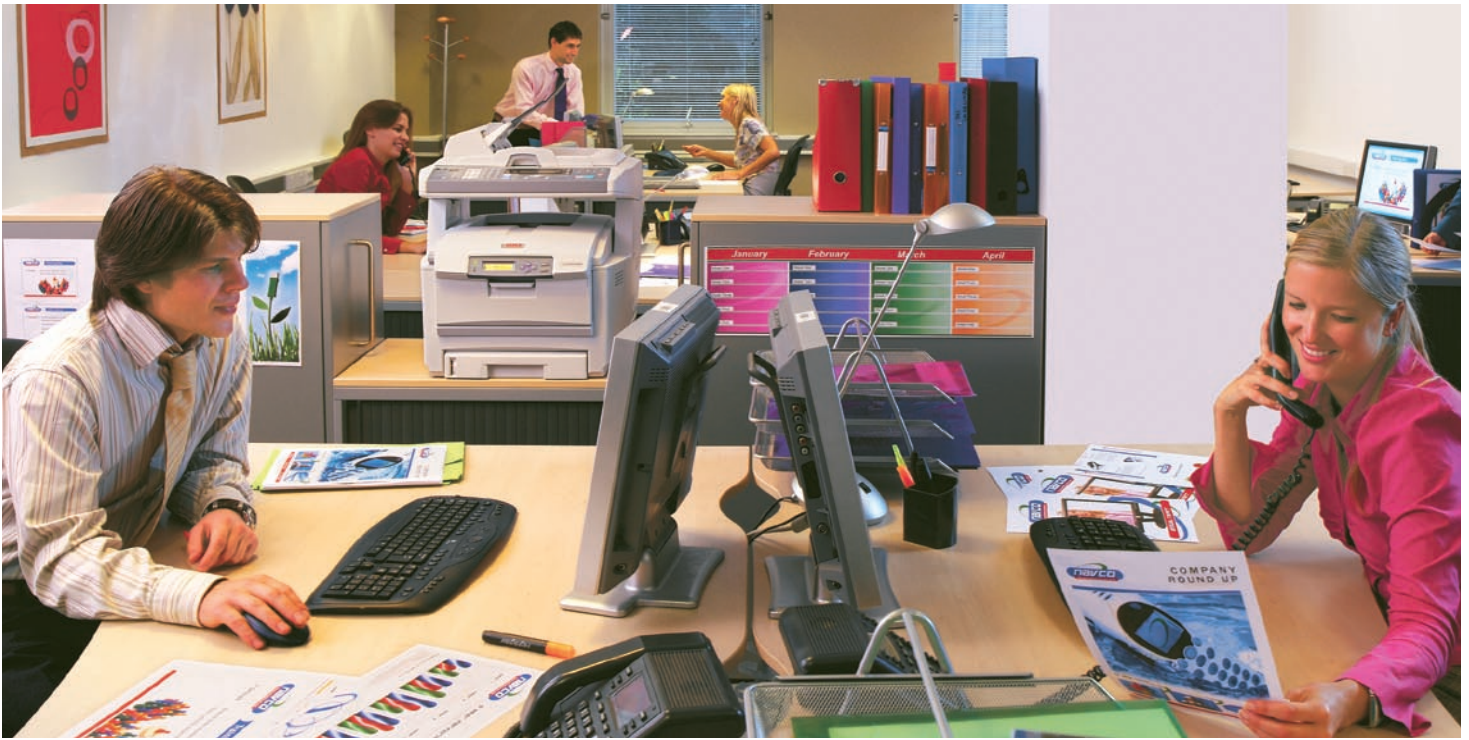
**CX2032 MFP**

**OKI**<sup>®</sup>  
PRINTING SOLUTIONS



**High performance and spectacular color  
in an easy-to-use workgroup MFP**





## Full multifunctionality and High Definition Color in a fast, easy-to-use MFP for small to medium workgroups

The CX2032 MFP from OKI Printing Solutions is a truly integrated color-and-mono device that can print, copy, scan and fax. It will satisfy the high-volume demands of a busy office environment, bringing greater productivity and cost-savings to your business.

It's perfect for small to medium workgroups, delivering color or black & white documents quickly and efficiently, along with 4-in-1 multifunctionality and real value for your investment.

The CX2032 MFP is designed to increase your pace and improve your image.

**More functionality means more for business** – With the CX2032 MFP's superior paper handling and software, businesses can quickly produce professional results in-house. Big tasks are handled with ease. Exceptional print and copy performance will enhance productivity without compromising print quality. Analog fax and a wide range of easy-to-use "scan-to" features will streamline processes without the need for a steep learning curve. All at a highly competitive price.

**High-quality documents for a better impression** – Even with print speeds of up to 20 ppm in color and 32 ppm in black & white<sup>1</sup>, there is no compromise on print quality. High Definition Color technology and 1200 x 600 dpi resolution improve detail, color depth and finish, delivering

stunning output on ordinary office paper for truly professional-looking business documents. Auto Color Balance provides consistent results throughout the life of the printer.

**Manage the network, manage the costs** – Included within the CX2032 MFP are three useful, powerful pieces of software, all of which help to keep costs down and productivity up. The Network Set-up Tool allows easy installation across your network; PrintSuperVision enables administrators to remotely monitor all printers; and Job Accounting software makes it simple to manage color usage and costs.

**Simple to install—even easier to operate** – With its compact, ergonomic design the CX2032 MFP fits into the smallest office space. It's network-ready and simple to set up, and the user-friendly operator panel speeds every function.

**Built-in dependability keeps your work flowing** – As with all OKI Printing Solutions products, the CX2032 MFP is built to perform, day in, day out. Its straight paper path, high duty cycle, and high-capacity consumables help ensure that the device keeps running, minimizing the need for user intervention while maintaining workflow.

OKI Printing Solutions backs the CX2032 MFP with 24x7x365 live tech support.<sup>2</sup>

### CX2032 MFP Highlights:

- Print, copy, scan and fax for increased productivity
- Print and copy speeds of up to 20 ppm in color and 32 ppm in black & white<sup>1</sup>
- High Definition Color printing technology for outstanding print and copy quality
- Up to 1200 x 600 dpi print resolution
- Hassle-free networking; easy-to-use functionality
- Full-featured analog fax
- Scan to PC, network, e-mail or FTP site
- Compact design to fit your environment
- 50-sheet auto document feeder (ADF)
- 400-sheet standard paper capacity, expandable to 930 sheets with optional 2nd tray
- Banner printing capability on sheets up to 4 feet in length
- Optional duplex (2-sided) printing and 40 GB Hard Disk Drive
- Separate toner cartridges and image drums for greater cost efficiency

<sup>1</sup> Published performance results based on laboratory testing. Individual results may vary.

<sup>2</sup> Available in the U.S. and Canada only.



# The CX2032 MFP Color Multifunction Product from OKI Printing Solutions consolidates and integrates several devices into one compact unit.

The user-friendly CX2032 MFP puts its full functionality at your fingertips. The operator panel features a clear, organized array of navigation buttons, a backlit LCD display and an alphanumeric keypad. The top of the MFP tilts back for easy access to the individual toner cartridges and image drums.

**50-sheet ADF:** the capacity of the automatic document feeder increases user productivity

**Alphanumeric keypad:** enter e-mail addresses, FTP sites, fax numbers, codes and quantities with a touch

**Easy-to-access functionality:** primary features are simple to locate and access

**High Definition Color:** printing technology ensures breathtaking output, even on plain office paper

**Single Pass Color™ technology:** straight-through paper path allows for superior flexibility in paper handling

**Flatbed scanner:** handles up to 8.5" x 11" documents on the glass, and up to 8.5" x 14" documents via the ADF

**Backlit LCD display:** further simplifies navigation; enhances user productivity

**Compact, space-saving design:** the small, office space-saving footprint of the CX2032 MFP allows it to fit into most work environments

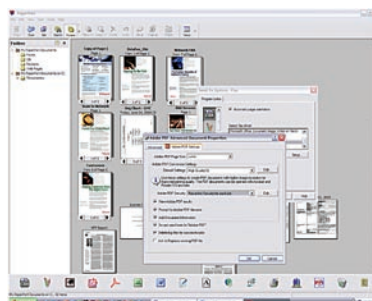
**400-sheet paper tray:** means fewer user interventions; capacity expands to 930 sheets with optional 2nd tray



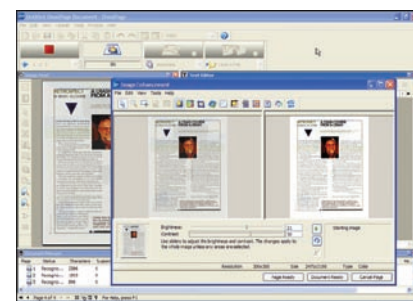
**Document management made simple** – The CX2032 MFP comes with software that lets you move between scan-to-tasks with a single click, including Scan-to-Email, Scan-to-Folder, Scan-to-PC Fax and Scan-and-Print.

Additional software easily turns piles of paper and photos into PDF and JPEG files—using the MFP's scanner—and saves them to your computer for future use.

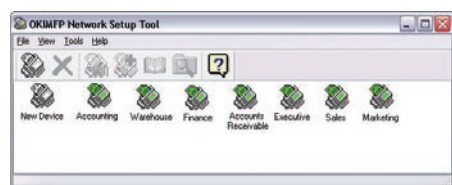
And the CX2032 MFP also has a precision optical character recognition (OCR) program to quickly turn office documents and forms into electronic files for editing, searching and sharing.



**PaperPort from Nuance®** is a scanning and document management application that turns paper into digital content.



**Nuance's OmniPage®** software converts paper into editable electronic documents (via OCR), saving you time and increasing your productivity.



**Network Setup Tool** makes connecting your workgroup to the CX2032 MFP a breeze. Access can be granted with a click.

# CX2032 MFP

## Specifications

### Printer

- **Print Speed:** Up to 20 ppm color, 32 ppm black & white<sup>1</sup>
- **Time to First Page:** As fast as 11 seconds in color, 8 seconds in black & white<sup>1</sup>
- **Print Resolution:** 1200 x 600 dpi
- **Processor Speed:** 500 MHz
- **Duty Cycle:** 60,000 prints/copies per month
- **Connectivity:** USB v2.0 High Speed; 10/100 Base-T Ethernet (network)
- **Emulations:** PCL® 5e, PCL 5, PCL 6; PostScript® 3™
- **Operating Systems:** Windows® Vista®/Vista x64, XP/XP x64, Server 2003/Server 2003 x64, 2000
- **Fonts:** 86 PCL, 136 PostScript fonts
- **Duplex (2-Sided) Printing:** Optional

### Copier

- **Copy Speed:** Up to 20 cpm color, 32 cpm black & white<sup>1</sup>
- **First Copy Out:** As fast as 23 seconds in color, 15 seconds in black & white<sup>1</sup>
- **Copy Resolution:** Up to 600 x 600 dpi
- **Copy Scaling:** 25% to 400% in 1% increments
- **Copy Scaling Presets:** 7 – 25%, 50%, 78%, 98% (fit to page), 100%, 127%, 200%
- **Copy Modes:** Speed, Text, Photo
- **Copy Quantity Selection:** 1-99

### Scanner

- **Scan Type:** Color and black & white; flatbed
- **Scan Speed:** As fast as 3 sec./pg. in black & white; 6 sec./pg. in color
- **Scan Resolution:** Up to 4800 dpi
- **Scan-to-PC:** Create electronic file from hard copy original with Nuance® PaperPort® 10 software
- **Address Book Management:** LDAP (Lightweight Directory Access Protocol)
- **Scan-to Functionality:** Scan to e-mail with LDAP support and without PC; to server (FTP sites); CIFS and TWAIN
- **Formats Supported:** BMP, PDF, TIFF, JPEG
- **Driver Interface:** TWAIN, WIA



### Fax

- **Fax Modem:** 33.6 Kbps Super G3
- **Transmission Speed:** 3 seconds/page<sup>2</sup>
- **Fax Resolution:** Up to 200 x 400 dpi
- **One-Touch Dial:** 10 locations
- **Broadcast Transmissions:** Up to 100 locations, 20 groups
- **Fax Memory:** 100 pages<sup>2</sup> (1.5 MB)
- **Fax Functions:** Broadcasting, Delayed transmission, Speed dial, Auto redial, Activity report (sending/receiving)

### Document Management

- **Utilities:** Nuance® PaperPort® 10, Nuance OmniPage® 4.2 SE; OKI® LPR, Color Correct, Color Swatch; Network Setup Tool; TWAIN driver; Job Accounting software; PrintSuperVision; Language Panel Downloader; Storage Device Manager; Profile Assistant

### System Memory

- **Standard/Max Imaging RAM:** 256 MB/768 MB
- **40 GB Hard Disk Drive:** Optional

### Paper Handling

- **Scanner ADF:** Up to 50 letter/legal sheets (16 lb. – 28 lb.)
- **Paper Sizes (Min./Max.):** Main tray from 4.1" x 5.8" to 8.5" x 14"; Multi-Purpose tray from 3" x 5" cards to 8.5" x 47.24" banners
- **Standard Printer Input:** 400 sheets
- **Maximum Printer Input:** 930 sheets with opt. 2nd tray
- **Output Capacity:** 250 sheets
- **Paper Types:** Letter, Legal, Banner, Executive, A4, A5, B5, A6; Envelopes – C5, DL, Monarch, COM 9, COM 10
- **Paper Weight:** Main tray 17 lb. – 32 lb. (64–120 gsm); Optional 2nd tray 17 lb. – 46 lb. (64–176 gsm); Manual feed 20 lb. bond – 110 lb. index (75–203 gsm)

### Environmental

- **Size (WxDxH):** 19.7" x 23.6" x 26.4" (50.0 cm x 60.0 cm x 67.0 cm)
- **Weight:** 81.6 lb. (37.0 kg)
- **Power Consumption:** Peak 1200W; Standby 100W; Power Save <15W
- **Acoustic Noise:** Operating (Printing/Scanning/Copying) <53 dB; Standby <39 dB

**For more information** on the CX2032 MFP Color Multifunction Product and supplies, please call **1.800.OKI.DATA** (800.654.3282) or visit our website: [www.okiprintingsolutions.com/us](http://www.okiprintingsolutions.com/us)

<sup>1</sup> Published performance results based on laboratory testing. Individual results may vary.

<sup>2</sup> Based on ITU-T Test Chart #1.

<sup>3</sup> Toner cartridges have an estimated life based on 5% coverage of letter-size pages. Unit ships with 2,000-page "starter" toner cartridges.

<sup>4</sup> Estimated life, based on 3 pages per job continuous print.

## Ordering Information

Description	Part Numbers	
CX2032 MFP 120V (Multilingual)	62428801	
<b>Options</b>		
Duplex (2-Sided Printing) Unit	43347501	
530-Sheet 2nd Paper Tray	43347608	
256 MB DIMM	70051601	
512 MB DIMM	70051701	
40 GB Hard Disk Drive	70043502	
Storage Cabinet	70052602	
<b>Supplies</b>		
<b>Toner Cartridges:</b>		
Cyan Toner Cartridge	5,000 pg. <sup>3</sup>	43324476
Magenta Toner Cartridge	5,000 pg. <sup>3</sup>	43324475
Yellow Toner Cartridge	5,000 pg. <sup>3</sup>	43324474
Black Toner Cartridge	6,000 pg. <sup>3</sup>	43324477
<b>Image Drum Kits:</b>		
Cyan Image Drum Kit	20,000 pg. <sup>4</sup>	56121103
Magenta Image Drum Kit	20,000 pg. <sup>4</sup>	56121102
Yellow Image Drum Kit	20,000 pg. <sup>4</sup>	56121101
Black Image Drum Kit	20,000 pg. <sup>4</sup>	56121104
<b>Print Media</b> <b>Sheets Per Box</b>		
Bright White Proofing Sheets:		
8.5" x 11" (32 lb.)	500	52206101
SynFlex™ Paper (8.5" x 11" – Waterproof and Tear-resistant)	100	52205901
Ultra Gloss Paper (8 pt.):	100	52208901
	250	52208902
Banner Paper (8.5" x 35.4")	100	52206002

Specifications are subject to change without notice.

Featured products may not be available in all countries. Please contact your local office for regional availability.

©2007 Oki Data Americas, Inc. OKI Reg. T.M., M.D., Oki Electric Industry Co., Ltd. Single Pass Color T.M. and design Reg. T.M., Hot Key, High Definition Color logo T.M., Oki Data Corp. Windows, Vista Reg. T.M., Microsoft Corp. Nuance, PaperPort, OmniPage Reg. T.M., Nuance Communications, Inc. USB-IF T.M., Universal Serial Bus Implementers Forum, Inc. ENERGY STAR Reg. T.M., U.S. EPA.



**ALL MAKES** Since 1945

**Office Machine Co., Inc.**

LOS ANGELES: 150 West 24th Street, Los Angeles, CA 90007-2798 Phone: (213) 749-7483 Fax: (213) 746-2905  
 SAN DIEGO: 4895 Savannah Street, San Diego, CA 92110 Phone: (619) 276-4000 Fax: (619) 276-1641  
 ORANGE COUNTY & RIVERSIDE: (714) 730-4857

[WWW.OKIPRINTINGSOLUTIONS.COM](http://WWW.OKIPRINTINGSOLUTIONS.COM)

**OKI**  
PRINTING SOLUTIONS